



ERGO

Irreversible electromechanical gear motor with jointed arm for swing gates. External fitting.

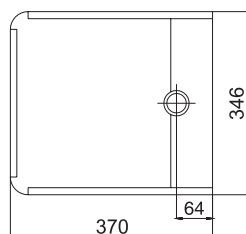
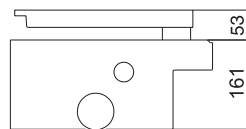
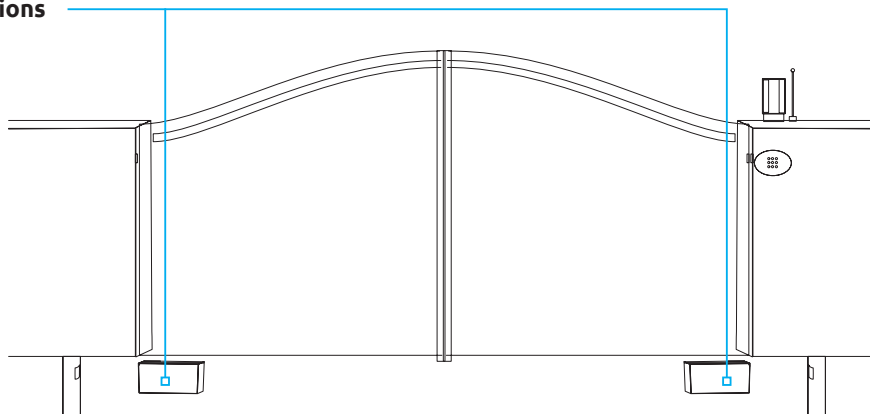
● = 24V DC

Code	Leaf	Motor	Description	Pcs. / Pallet
● ER4 24	3 m	24V DC	Grease -lubricated, irreversible gear motor, complete with mechanical stop for opening and closing. Model equipped with encoder. Pre-wired 2.5 m connector cables.	24
● ER4 24 UNI	3 m	24V DC	Grease -lubricated, irreversible gear motor, complete with mechanical stop for opening and closing. Pre-wired 2.5 m connector cables.	24
ER4	3 m	230V AC	Quick, grease -lubricated, irreversible gear motor, complete with mechanical stop for opening and closing. Model equipped with encoder. Pre-wired 2.5 m connector cables. Condenser supplied.	24
ER4L	4 m	230V AC	Slow, grease -lubricated, irreversible gear motor, complete with mechanical stop for opening and closing. Model equipped with encoder. Pre-wired 2.5 m connector cables. Condenser supplied.	24
ER4B	3 m	230V AC	Quick, oil -lubricated, irreversible gear motor, complete with mechanical stop for opening and closing. Model equipped with encoder. Pre-wired 2.5 m connector cables. Condenser supplied.	24
ER4 UNI	3 m	230V AC	Quick, grease -lubricated, irreversible gear motor, complete with mechanical stop for opening and closing. Pre-wired 2.5 m connector cables. Condenser supplied.	24
ER4 UNI L	4 m	230V AC	Slow, grease -lubricated, irreversible gear motor, complete with mechanical stop for opening and closing. Pre-wired 2.5 m connector cables. Condenser supplied.	24

*UNI: motors without encoder

Irreversible electromechanical gear motor with jointed arm for swing gates. External fitting.

dimensions



ERGO

Technical specifications

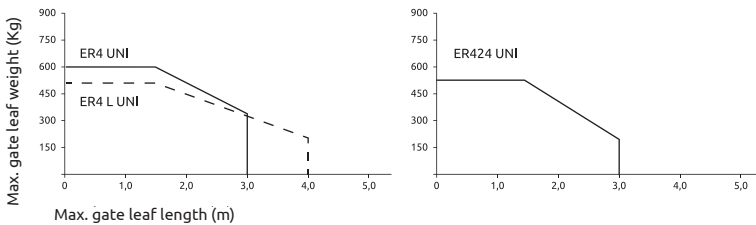


● = 24V DC

	ER4 UNI (230V 50Hz)	ER4L UNI (230V 50Hz)	ER4B (230V 50Hz)	ER424 UNI (24V)
Max. gate leaf length (m) - see drawing	3	4	3	3
Motor power supply (V)	230V AC	230V AC	230V AC	24V DC
Power (W)	300	300	300	120
Torque (Nm)	350	350	350	250
Lubrication (Type)	Grease	Grease	Oil	Grease
Overheating protection (°C)	140	140	140	-
Operating T° (°C Min/Max)	- 20 + 70	- 20 + 70	- 20 + 70	- 20 + 70
Protection class (IP)	67	67	67	67
Time to cover 90° (s)	18	28	18	20
Intermittence (%)	35	35	35	80

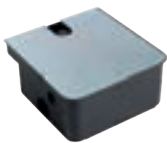
Limit on use

ERGO



NB. In windy areas or when the gate has a particular structural shape, we advise reducing the limits on use.

ERG



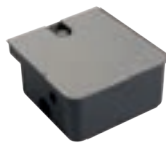
Foundation box complete with supports, caps, levers and screws. Release system not included. Cataphoresis box. Galvanised cover.

AELOR



Horizontal electric lock (1 Pc./Pack)

ERG CX



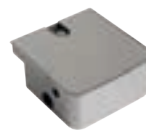
Foundation box complete with supports, caps, levers and screws. Release system not included. Cataphoresis box. Stainless steel cover.

AER1



Chain transmission for openings of up to 180° (1 Pc./Pack)

ERGX



Foundation box complete with supports, caps, levers and screws. Release system not included. Stainless steel.

AMA2



Key release (1 Pc./Pack)

AELVE



Vertical electric lock (1 Pc./Pack)

TL

- Page 116



Sign plate