



TL240

Automatic Sliding Telescopic Door

info@deutschtec.de

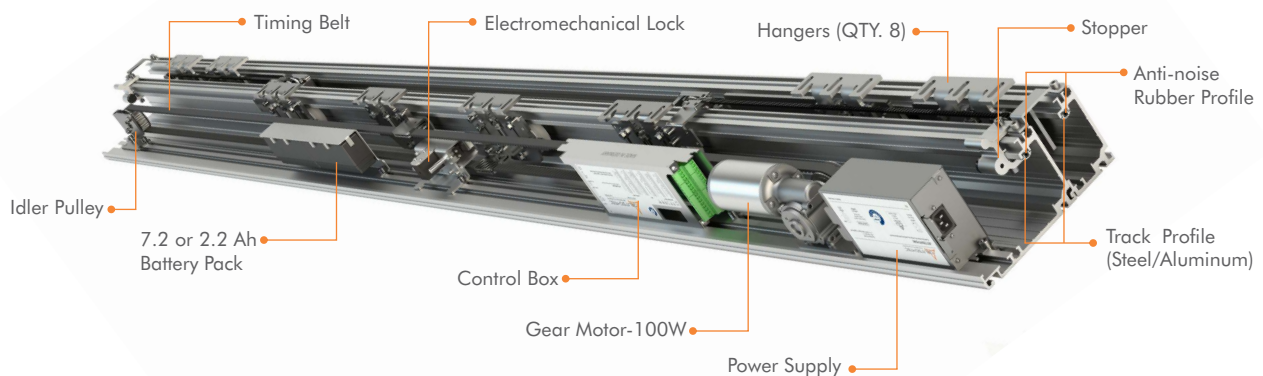
TL240

Outstanding quality and unique design have made the perfect combination in Deuschtec TL products. These highly intelligent models enjoy incredible strength as well. Employing world-famous German technology has made Deuschtec TL series into robust and sturdy products which will easily handle heavy weights – as a result of using triple-glazing glass, for instance – and painlessly resist tension – for example, caused by extreme weather conditions.

Due to these models' smart design to be energy-saving and immune to wear, we have been able to present you an entry solution which is long-lasting, environment-friendly and an excellent value for your money. What is more, they have all successfully passed one-million-cycle test and are TÜV approved.

TL series is designed in a way that the back leaves move with half the speed of the front leaves. With this stealthy coordinated movement, both back and front leaves reach the fully-open point simultaneously and provide you with an opening up to 2/3 of the installed width.

TL series' telescopic mechanism is designed and made in a way that can easily give a brilliant performance in places with high traffic. Having passed one-million-cycle test, this mechanism is also considered absolutely suitable for escape doors.



Technical Detail TL240

| | |
|---------------------------------|---|
| Opening width - double leaves | 900 - 3000 mm |
| Opening width - four leaves | 1800 - 4000 mm |
| Max leaf weight, double | 2 x 150 Kg |
| Max leaf weight, four | 4 x 100 Kg |
| Operator height | 155 mm |
| Operator depth | 226 mm |
| Opening speed | Variable up to 1.1m/s (Four Leaves) |
| Closing speed | Variable up to 1.1m/s (Four Leaves) |
| Hold-open time | 0 - 30 s |
| Ambient temperature | -15 to +50°C |
| Protection class | IP20 |
| 100% German-made operator kit | ✓ |
| Track profile | Anti crash stainless steel Aluminium |
| Anti-noise rubber profile | ✓ |
| External protected power supply | ✓ |
| Power supply unit | 230V/33V,50VA (Peak 120VA) |
| Gear motor power | 100 W |
| Number of motors | 1 |
| Number of control units | 1 |
| Number of hangers per leaf | 2 |

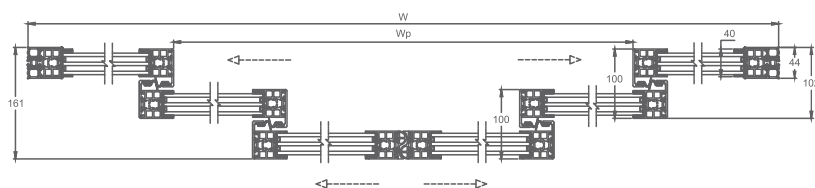
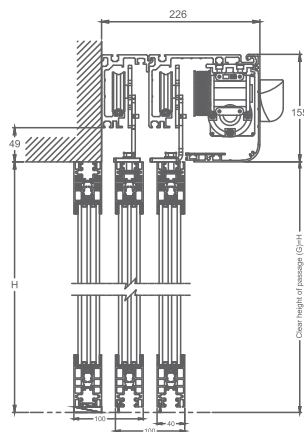
Technical Detail TL240

| | |
|---|-------|
| Second motor for emergency opening | - |
| Dual gear motor and control unit set for master/slave concept | - |
| Maximum power consumption | 250 W |
| Maximum operation cycles with 2.2 Ah back-up battery (optional) | ≈400 |
| Maximum operation cycles with 7.2 Ah back-up battery (optional) | ≈1000 |
| Back-up battery for emergency opening | - |
| Possibility to use safety sensors with testing signal | ✓ |
| Read-out memory with error codes | ✓ |
| Mechanical key switch | ✓ |
| 24V DC output for external accessories | ✓ |
| Power lock | ✓ |
| Electromechanical Lock (Optional) | ✓ |
| Lock monitoring | ✓ |
| Programmable input and output | ✓ |
| Digital programme switch (optional) | ✓ |
| Emergency exit routes in both directions | - |
| DMS (Optional) | ✓ |

TL240

| Standard | TL240 |
|---|-------|
| Compliant with German standard DIN 18650 | ✓ |
| Compliant with EU standard EN 16005 | ✓ |
| Compliant with EU standard EN 60335 | ✓ |
| Compliant with EU standard EN ISO 13849-1 | ✓ |
| Compliant with EU low-voltage directives | ✓ |
| Compliant with EU EMC directives | ✓ |
| Manufactured according to ISO 9001 | ✓ |
| TÜV approved | ✓ |
| CE conformity | ✓ |
| Tested for 1.000.000 cycles | ✓ |

| Frame Types | TL240 |
|-------------|-------|
| THB | ✓ |
| TBS | ✓ |
| UTS | ✓ |
| Frameless | - |



TL240-THB frame

CONTROL UNIT

Deuschtec has joined up with Leesys GmbH, a part of Siemens Enterprise Communication, to create a fully German high-tech novel control unit. By drawing on the most advanced German engineering technology, Deuschtec TL series' controlling microprocessor circuit boards have been made to respond to all European Union and German necessities such as machinery directive, electromagnetic compatibility (EMC) and low voltage directives. Moreover, its software and electronic design have met all relevant German and European standards such as DIN18650, EN16005 and EN ISO 13849. These distinguishing features guarantee the highest levels of security and the most durable system.



GEAR MOTOR

TL series is driven by a highly powerful reliable electromotor made by German manufacturer. Having met various international standards, our motors are made service-free, sturdy and long-lasting. Their 100W motors are absolutely indestructible and are there to ensure reliable performance for a lifetime. Great efficiency and enhanced function are achieved through employing years of experience and the latest technologies in the process of our motors' design and production.



TRACK PROFILE

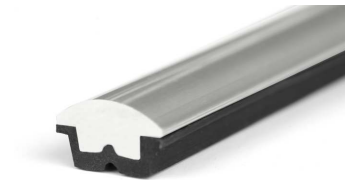
Stainless Steel Track profile :

Since Deuschtec's stainless steel track profiles are rust-proof and anti-abrasion, they will never need to be replaced. This will be a great value for your money during time and will prevent any possible complication which may happen when replacing profiles.



Aluminium Track profile :

When Deuschtec's detachable aluminum track profiles are worn out after a lengthy period of time, they can easily be replaced, which costs much less in comparison with replacing the whole rail.



POWER LOCK

In many cases, there is no real need for (optional) electromechanical lock and buildings ensure security by other means. However, it is necessary for the entrance to be allowed limited access. In this case, power lock free function is a wholesome solution. When the door is locked, if there is pressure on it for becoming open, the motor will use its full power in the opposite direction and make it practically improbable to enter for unauthorized individuals.



THERMAL BREAK FRAME

THB

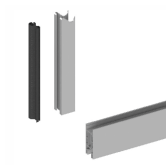
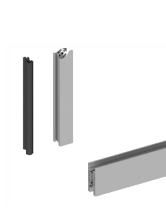
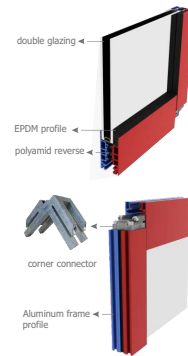
A great choice of frame to pair with this impeccable series is thermal break frames (THB) which by insulating the door against undesired or harsh weather conditions, save the energy and consequently, your budget! Furthermore, since these are incredibly strong frames, they are an ideal option when heavy doors are required.

TBS

When saving energy is of importance, TBS frame is an economical and inexpensive solution. Besides being thermal break, it can be coupled with double-glazing glass. Its thinness and also one-of-a-kind combination with Deuschtec TL series, which hides the upper horizontal profile inside the operator's case, has made TBS frame a smart gorgeous choice for modern architecture. This type of frame has successfully been tested for escaped doors.

UTS

This frame is the non-thermal break version of TBS and has all its advantages. Due to not being thermal break, it has an even more competitive price. While enjoying all TBS beauties, for buildings' inside doors and for places where the exchange of cold and hot air does not matter much, UTS is an excellent value.





w w w . d e u t s c h t e c . d e

Deuschtec GmbH
Am Fuchsbau 13
15345 Petershagen/Eggersdorf
Deutschland

Phone: +49 (0)3341 30 22 4 - 0
Fax: +49 (0)3341 30 22 4 - 25

E-Mail: info@deuschtec.de



EN.15.17102022